



Simpo Digital Podium

User manual

MODEL : SIMPO-220

AHA

Contents

Introduction and notes about connection	----- 1
Caution and Warnings	----- 2
System Components	----- 3
Explanation of connection terminal(upper part)	----- 4
Explanation of connection terminal(lower part)	----- 5
PC storage in/output	----- 6
LAPTOP PC connection	----- 7
PC connection	----- 8
Speaker connection	----- 9
Product specifications	----- 10
PC storage dimensions	----- 11
Fault diagnosis	----- 12

Introduction

The Simpo is simple. The podium is minimalistic in both design and operation, yet powerful enough to support any kind of presentation you'd like to make. The Simpo's hardware is incorporated into its structure, providing functionality without the added bulk of regular podiums. Designed to be as efficient as possible, the Simpo was designed to be operated with either a mini-pc, laptop, or other external device. Mini-pcs are light enough and compact enough to fit into the Simpo's front PC Storage case, and capable of powering your presentation requirements. The Simpo also comes with an easy-to-use laptop connection via a pull out USB and RGB cables. Multiple users can use a variety of devices to easily connect with the Simpo. Presentations have never been so Simpo.

About connecting your external devices

We realize that devices come equipped with a variety of video output ports (VGA, HDMI, DVI, Display, Mini Display). It's hard to know which video output format will be used in each specific situation, and it would be expensive and unnecessary for us to supply you with every type of connector possible. All new video port styles have cable adapters that can be used to connect them to a VGA cable. Your local electronics store should have these cable adaptors in stock if you find that you can't connect directly using a VGA port. Also remember that VGA is a video only format. Although some new ports are able to provide audio and video signals, since the connection terminates in VGA format, this is not possible. You must connect the audio cable to the laptop or device's audio out put in order to have an audio signal.

If you'd like to use the Simpo's tablet to interact with your device through touch, it is necessary to connect the USB cable. This cable is the means of touch communication between your device and the tablet monitor. If you are using a dated operating system, it may also be necessary to upload a touch driver.



Caution and Warnings



Don't use the Simpo with a damaged power cord, plug or loose socket.
• It may cause fire or electric shock.



Don't touch with a moist hand when taking out or inserting the power plug.
• It may cause fire or electric shock.



Use power plugs, and sockets with grounded connections.
• If using ungrounded connections, it may result in fire or electric shock.



Fully insert into plug and ensure that the connection is solid.
• In the case that the contact is unstable, it may cause fire.



Don't bend or pull the power cord by force and do not place it under by heavy objects.
• It may cause fire or electric shock by damaging the cord.



Don't unplug the power cord while in use.
• It will cause breakdown of the product.



Don't drop when moving.
• It may be hurt or cause breakdown of the product.



Don't put flammable objects such as candles, insecticides, cigarettes near the product.
• It may cause fire.



Don't place heaters beside the power cord.
• It may cause fire or electrical shock and cord damage.



Don't place near water.
•The system may short or become severely damaged.



Install the product in a well ventilated location.

System Components

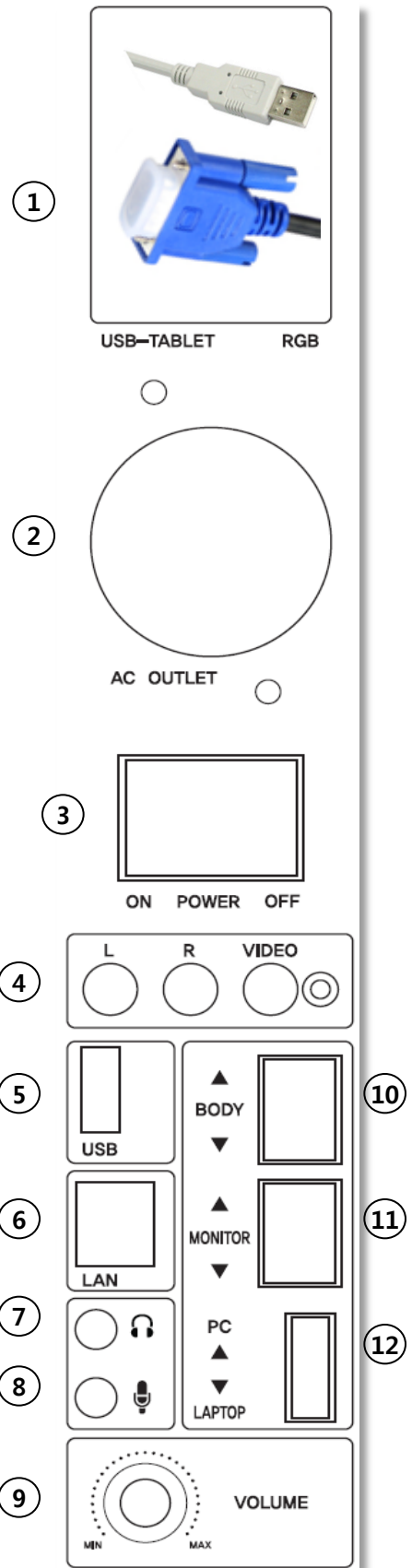


- ① Upper Cover (used to place laptops or text books). Do not sit or lean on this pullout cover, as it is not designed to support heavy objects. If putting heavy materials on the cover, it may cause it to break.
 - ② Gooseneck Microphone
 - ③ Main Monitor --- 22" wide tablet monitor with adjustable angle.
 - ④ Gooseneck Microphone Storage --- tilting the microphone to the right will decline and rest the microphone in its tray. Be mindful of the microphone when opening and closing the upper cover.
 - ⑤ Mini PC storage
 - ⑥ Outer input/output --- power or outer apparatus connection terminal.
 - ⑦ Wheel Stop Bar --- When the resting position is selected, fix the Simpo to the floor after adjusting the height of the stop bar.
 - ⑧ Keyboard and Mouse Drawer.
 - ⑨ Opening and closing upper plate
 - ⑩ Laptop and instrument connection
- * Above LAPTOP PC is not included in this product.

Explanation of connection terminal (upper part)



- 1) Input USB for laptop or other external device (TABLET sensing) / RGB(VGA) for video (gently pull the cables out, after usage push them back into the Simpo)
- 2) AC OUTLET(power for outer apparatus, same voltage as main input voltage)
- 3) Main power switch (when power is ON, switch will light)
- 4) Input video signal (input for composite audio and video)
- 5) USB (when connecting to outer apparatus' sensor, for example connecting to an IWB)
- 6) LAN Output (supply your external device with internet or a network connection)
- 7) Voice input(Laptop headphone)
- 8) Voice output(Laptop MIC)
- 9) Volume
- 10) Body height adjustment switch (maximum height of 150mm)
- 11) Monitor angle adjustment switch (remember to fully decline the monitor when finished with the unit. The monitor should be down fully when closing the Simpo's sliding cover.)
- 12) Input selection switch for PC and LAPTOP. PC will display the contents of the Simpo's main computer and Laptop will display the contents of an external device



Attention! When adjusting body height, ensure that you do not lean or place extra weight onto the Simpo. This will cause strain on the electric motor and cause it to wear out prematurely.

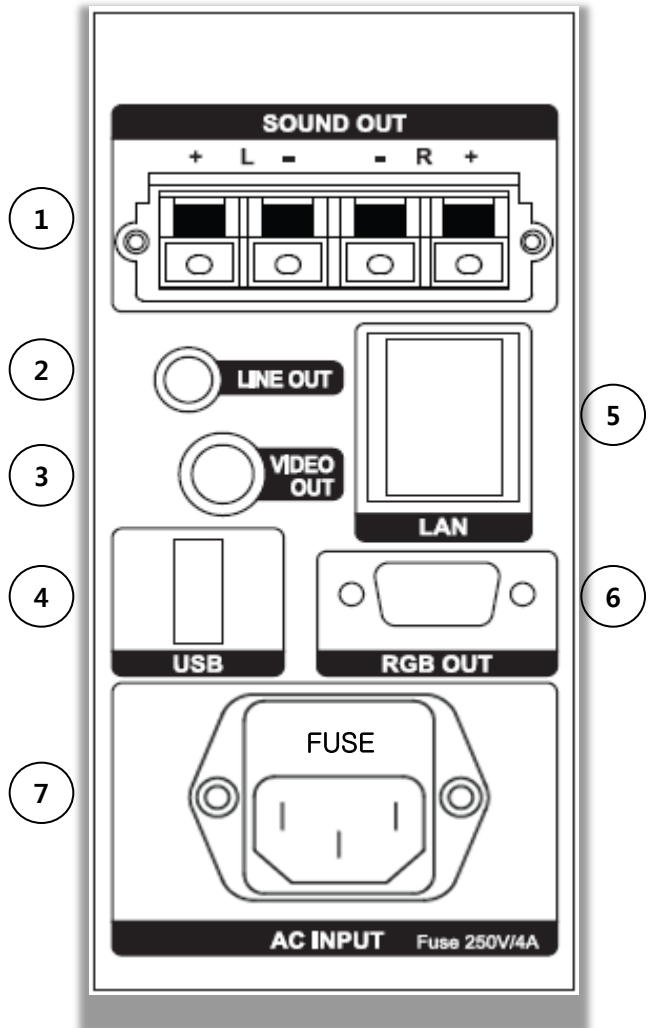
Explanation of connection terminal (side part)

- ① Speaker output terminal (25W+25W, 4 Ω)
- ② Audio output 1/8" (LINE OUT)
- ③ Video output
- ④ USB (for outer monitor touch sensor)
- ⑤ LAN Input
- ⑥ RGB (VGA) Output(for outer monitor)
- ⑦ AC Power input

Imbedded fuse in AC socket.



Always change to a fuse with the same capacity.

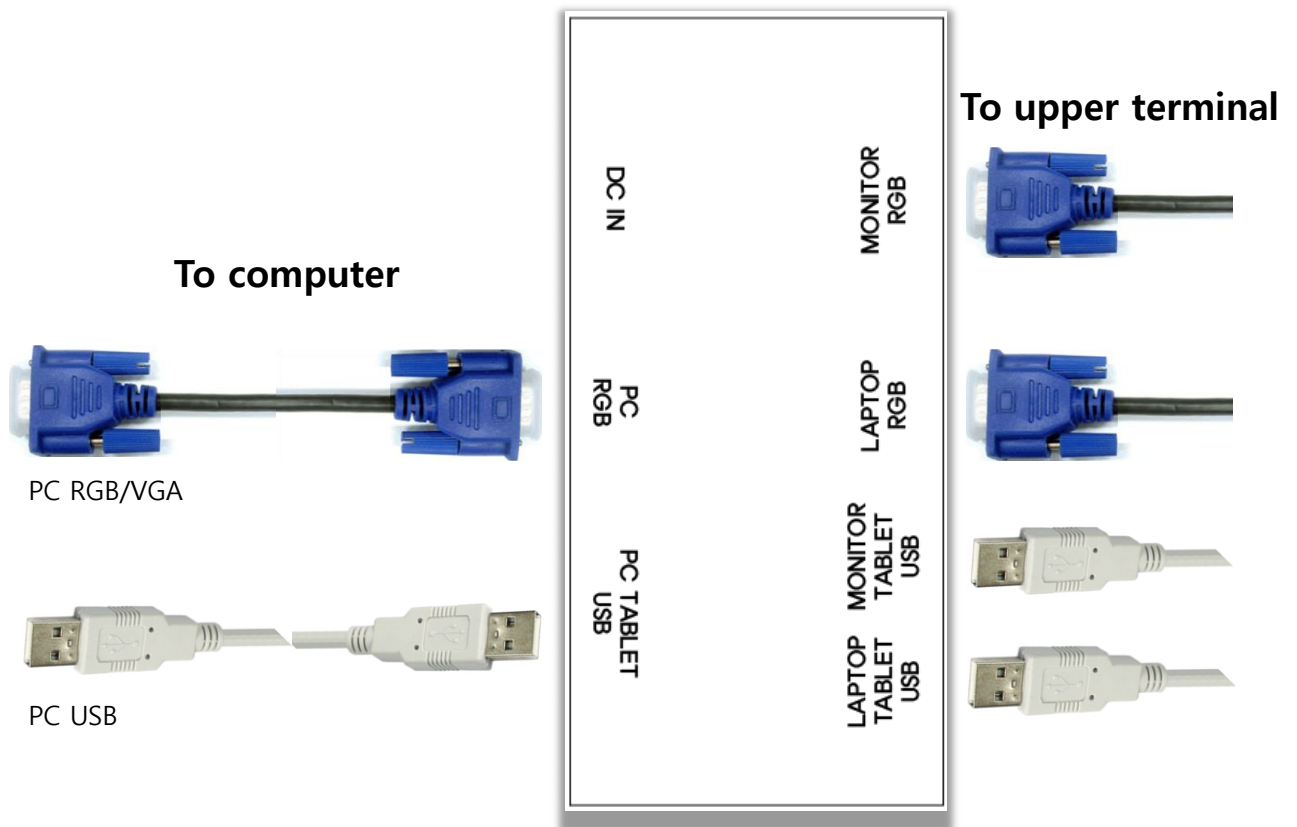


<Attention>

- ① Use speakers with suitable impedance. Output impedance is 4 Ω.
- ② Imbedded FUSE in AC socket. When changing, make sure to use a fuse with the proper rating. Imbedded FUSE is 250V, 4A.

PC storage in-output

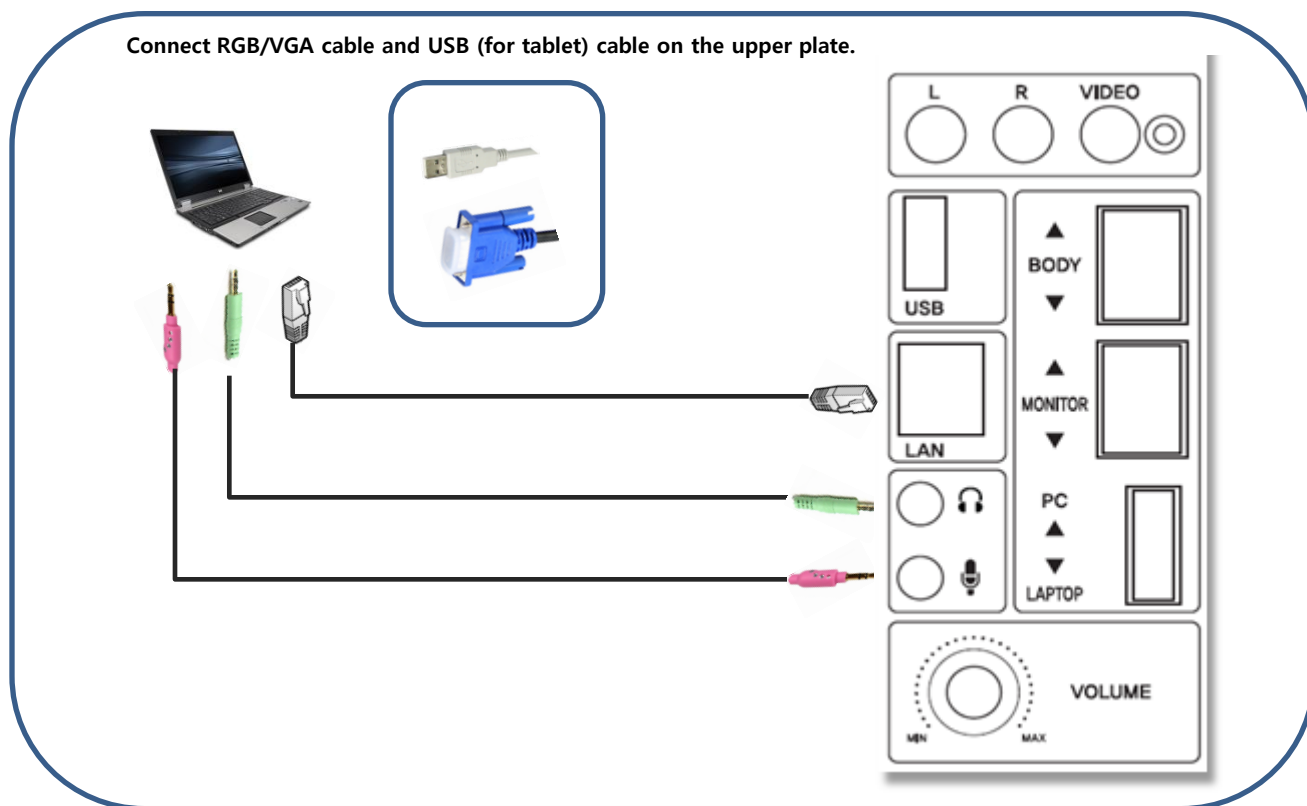
All cables are already connected as shown below.



PC Connection

- ◆ The Simpo and its PC storage were designed for use with a MINI PC.
 - the PC's monitor output port should be connected to the blue PC RGB/VGA cable.
 - the PC tablet USB cable should be connected so that the monitor can be used as a tablet.

LAPTOP PC connection



* LAPTOP PC connection

◆ Sound and LAN connection

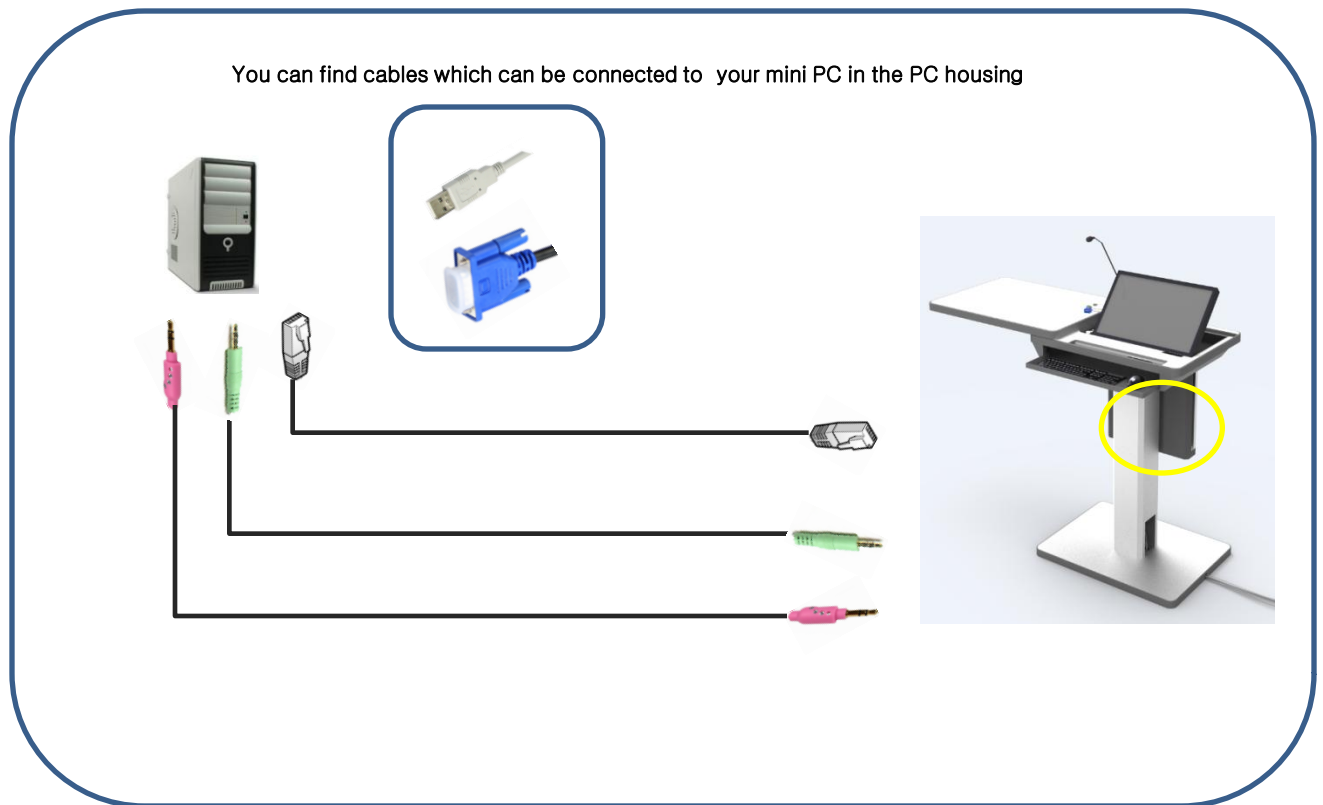
- 1) Connect cable from audio output terminal (Green) to the device's audio output.
- 2) Connect the audio input terminal (Pink) to the device's audio input.
- 3) Connect laptop LAN terminal to the device's LAN terminal.

It is only possible to record PC Sound if connecting amplifier's OUT and PC's sound IN Port (Pink).

◆ RGB/VGA and USB connection.

- 1) Connect RGB/VGA cable to laptop video output(VGA) on the left slide out cover.
- 2) Connect USB cable (for tablet) to Laptop USB terminal on the left slide out cover.

PC connection



* PC connection

- ◆ Connection sound and LAN
 - 1) Connect PC OUT cable to PC Audio output terminal in PC housing.
 - 2) Connect PC IN cable to PC AUDIO input terminal in PC housing.
 - 3) Connect LAN cable to PC LAN terminal in PC housing.

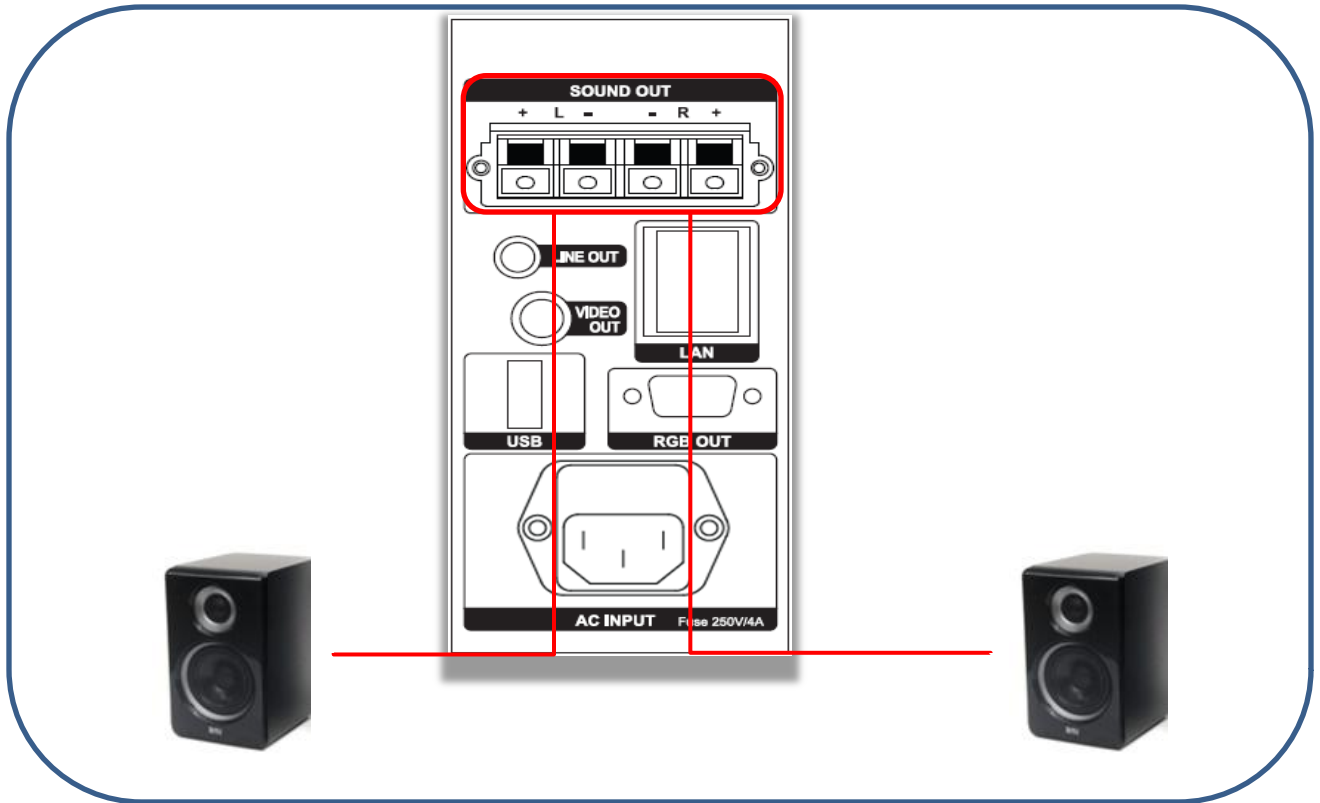
If user want to use PC and LAPTOP at the same time, use Hub additionally.

- ◆ Connection **RGB/VGA and USB**
 - 1) Connection RGB/VGA cable to PC RGB terminal in PC housing.
 - 2) Connect USB cable to PC USB terminal in PC housing.

The Simpo was designed for use with mainly a LAPTOP PC. It was also designed to look minimalistic and operate in the same manner. Instead of using a desktop computer to operate the Simpo, we suggest using a mini pc. These computers are small and lack a disk drive, but they have all the necessary capabilities for powering a presentation and connecting to networks or the internet.

Recommended mini PC size is 235(W) X 69(H) X 215(D)mm.

Speaker connection



* Connect speakers

◆ Amplifier can support a maximum output of 50W (25W + 25W) 4Ω.

ATTENTION! : When connecting speakers, pay attention that you do not reverse their polarity.

Specifications

Product specifications

contents	Specification
Speaker output	50W 4Ω (25W + 25W) Stereo
Mic input	30mV (1 Input)
Response frequency	25Hz ~ 20KHz
Highest angle of monitor	50 degrees
Input terminal	LAN , AV, RGB(LAPTOP), RGB(PC), MIC(LAPTOP), USB
Out put terminal	SOUND OUT, RGB, LINE OUT, VIDIO, AC OUTLET
Height / monitor angle	MOTOR actuator X 2EA
Power	AC 220V to 240V , 50/60Hz
Product size	900(W) X 945~1095(H) X 570(D) mm
Product weight	72Kg
Usage temperature/ Keeping temperature	0~40°C / -20~60°C

TABLET monitor specification

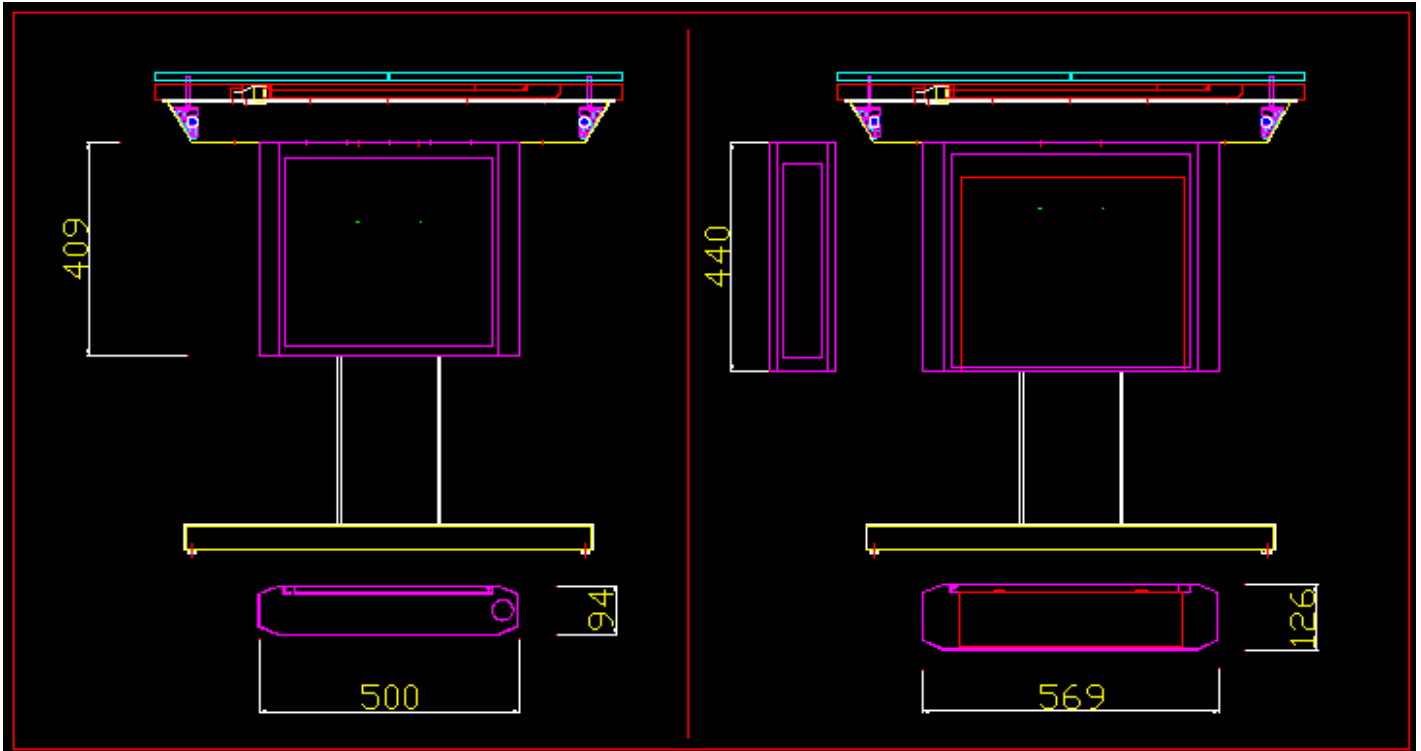
contents	Specification
Screen size	54.6cm 22형 Wide
Screen ratio	16:9
Penel Type	TFT Active Matrix
Pixel pitch(mm)	0.2482 X 0.2482
Contrast ratio	1000 : 1
Brightness(cd/m2)	250
Resolution(Pixel)	1920X1080
Backlight	LED
Active Area(mm)	477(H) x 268(V)
Color q'ty	16.7M
Viewing angle	160degree(left, right)150degree(up, down)
Recognition technology	Electromagnetic method
Pressure level	1024 levels
Detectable height	8mm
Interface	USB
Tablet Resolution	2048 LPI
Reading speed	133 PPS
Tablet power	USB power (DC 5V)
Pen battery lifetime	2000h
In-Out perminal	RGB, DVI, USB(TABLET)
Power	AC 100~240V
Consumption power	25W
Standby power	0.5W
Size(mm)	515(W) x 315(H) x 66(D)

PC Storage Dimensions

The Simpo is available with two PC storage case sizes. The smaller case is designed for use with mini PCs and the larger size for slim PCs. The dimensions for both are shown below in millimetres.

Mini PC Storage

Slim PC Storage



Fault diagnosis

Fault diagnosis

If encountering a problem with the Simpo, take a look at the list of most common resolutions below. Before requesting repair, make sure your problems aren't caused by any of these errors.

symptom	Fault diagnosis	remark
No power on	<ul style="list-style-type: none">✓ check for any problems in the power cord.✓ check that the power switch is on.✓ check that the socket is on.✓ check fuse was imbedded in power cord socket.	
Not recording with computer	<ul style="list-style-type: none">✓ check that PC AUDIO IN/OUT are connected properly.✓ check that the input device cable was connected properly.✓ check that the computer's volume level was not set too low.✓ check conversion switch of PC / LAPTOP.	
Microphone does not work	<ul style="list-style-type: none">✓ check mic for gooseneck (3PIN)✓ check the status of the connection cable.	
No sound	<ul style="list-style-type: none">✓ check that the volume adjustment was not set at minimum✓ check that the in/out put ports are connected properly.✓ when operating with a Laptop, the PC audio will not be output.	

! ATTENTION ! : Do not disassemble this product. There is a high risk of electrical shock.